



AUTOMATE™  
SMARTER SHADES

## AUTOMATE™ PULSE 2

Designed in California and made to be seen, the second generation of the Pulse hub allows for further customisation with the introduction of additional scenes and timers.

The new hub boasts native sunset and sunrise technology. Shades will raise or lower based on location to allow precise and automatic shade control.

With built-in Wi-Fi or the option of a LAN connection, the Pulse 2 quickly connects to the home's network to unlock the luxury of automated shade control.

Automate Pulse 2 offers more integrations than ever before. Experience voice-activated shade control via Google Assistant, Amazon Alexa and now Apple Homekit with Siri.



## AUTOMATE APP

The Automate App enables sophisticated shade control straight from any iOS or Android smart phone or tablet.

Utilise the Automate App to group shades by room or scene, establish custom schedules and set timers for convenient and efficient shade control.

## POWERED BY ARC

ARC™ (Automate Radio Communication) is Rollease Acmeda's proprietary, bi-directional communication technology that brings the Automate motorised shade systems together. ARC communicates the status of shade positioning and battery health straight to the Automate App.





## INTEGRATIONS

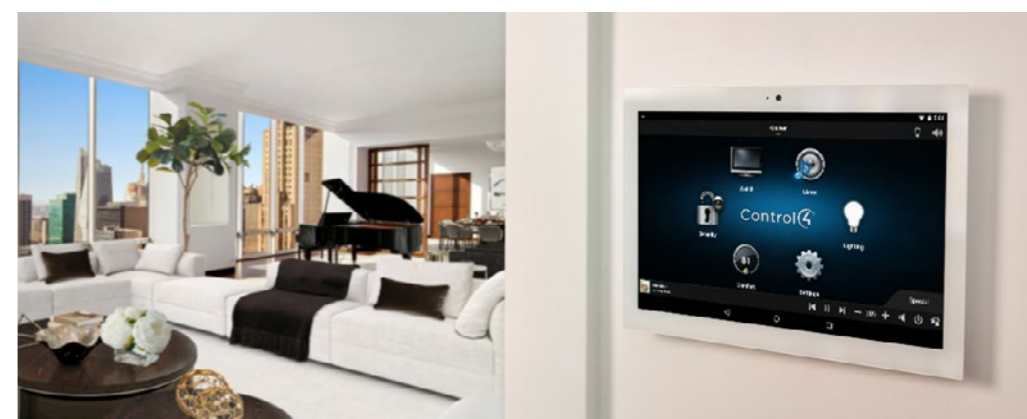
Utilising voice commands, operating Automate controlled shades is now more convenient than ever.

Automate takes advantage of native integration for shade control with Apple HomeKit & Siri, Google Home & Assistant and Amazon Alexa. The “native” control responds to the user’s naturally-spoken language for shade operation and does not require any additional set-up.

Alternatively, shades can be synchronised with smart devices and actions with IFTTT.

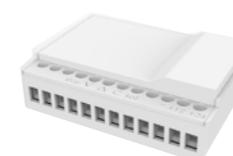


## HOME AUTOMATION SYSTEMS



Control shades, lighting, entertainment, security, climate and other connected devices via one convenient control system.

Automate is compatible with a variety of premium home automation systems of these solutions to enable shade control.



For home automation systems outside this compatibility list, simply use the Automate Relay Module to bridge the connection between the smart system and Automate motors.

Compatible with



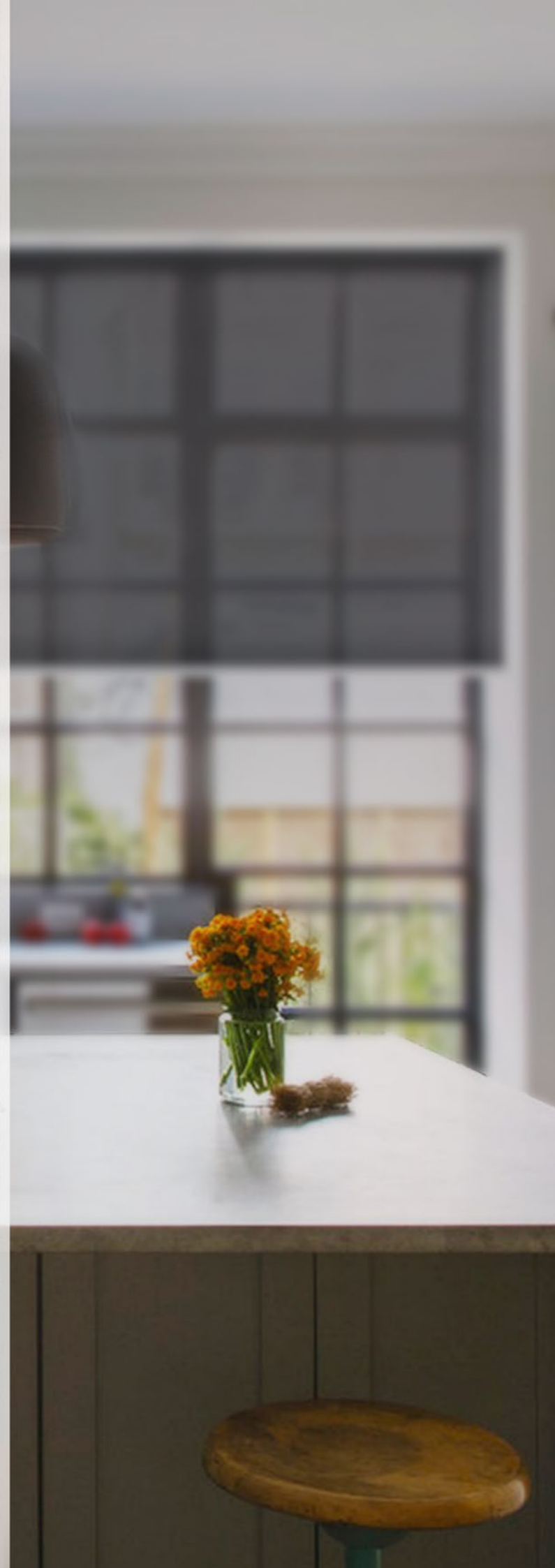


## AUTOMATE PUSH 5 REMOTE

The cutting-edge design of the new Automate Push5 remote control is modern, simple and functional.



Available in gloss white or matte black finish, the Push 5 features a tactile button layout to improve usability.



## AUTOMATE PARADIGM REMOTES & WALL SWITCHES

Automate Paradigm wall switches and hand-held remotes feature 15 channels within a contemporary design. The wireless Paradigm controllers are retro-fit ready, making them perfect for all motorised shade applications.

## ARC MOTION SENSOR

Installation of an ARC Motion Sensor allows for protection of external awnings from the elements.

The ARC Motion Sensor can detect movement and strong vibrations, such as wind, triggering the motor to automatically close the awning.



## SOLAR POWERED ARC WIND, LIGHT & RAIN SENSOR

The solar-powered ARC Wind, Sun & Rain Sensor naturally reacts to the elements to automatically open or close an awning, always providing a comfortable external environment or protection of the awning.



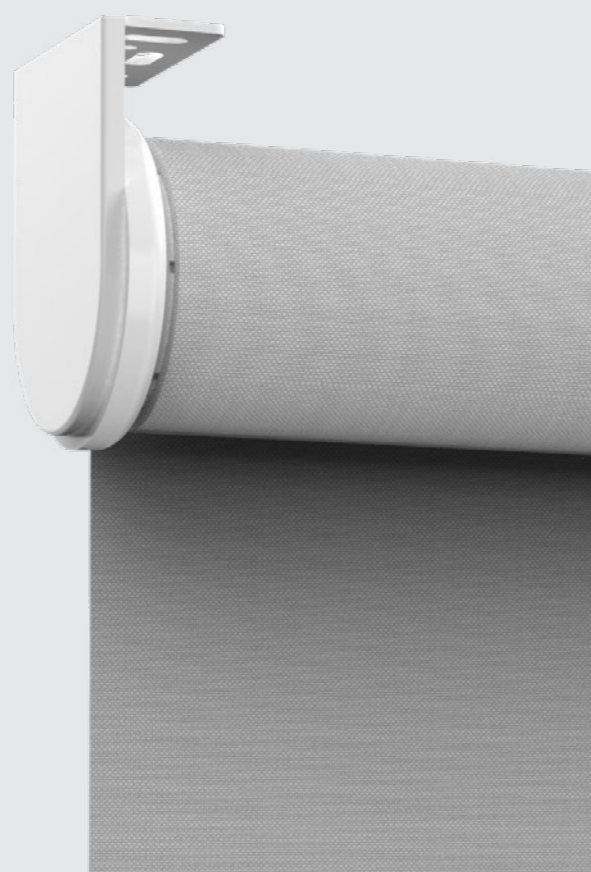


## AUTOMATE WIRE-FREE LI-ION ZERO MOTORS

The new lithium-ion battery motors boast a patented “wire-free” design with the antenna cable concealed within the motor head and a micro-USB port for charging.

Additionally, the motors feature new ‘soft close’ and ‘battery check’ technology. With the press of a button the motor moves the shade down to signify the battery percentage level, while ‘soft close’ ensures an elegant and quiet finish at the end of the shade’s movement.

Automate Wire-Free Li-ion Zero allows for proficient installation within residential homes and small commercial projects, with no electrical wiring required and the ability to be retrofit into existing Rollease Acmeda systems\*.



\*Retrofit capability only possible with RB08 and RB09 systems.



Automate Wire-Free Li-ion Zero 1.1  
5V, 1.1Nm, Ø25mm, 20-28RPM, 552mm long



Automate Wire-Free Li-ion Zero 2  
5V, 2.0Nm, Ø28mm, 20-28RPM, 649mm long



Automate Wire-Free Li-ion 3.0 v2  
5V, 3.0Nm, Ø35mm, 20-28RPM, 851mm long

COMING SOON



Automate Wire-Free Li-ion Q10 v2  
5V, 10.0Nm, Ø45mm, 9-5RPM, 817mm long

COMING SOON



## AUTOMATE SOLAR PANEL

With its smaller design and improved performance in low light, the new Automate Solar Panel offers an energy efficient upgrade for the entire Automate Wire-Free Li-ion range of motors.





## AUTOMATE DC ROLLER MOTORS

Automate DC motors are an excellent choice for motorising roller shades in the residential space or for small commercial projects.

The Automate DC Roller Motors connect with low voltage cables, so a qualified electrician is not required for set-up, therefore keeping installation costs to a minimum.

With the variable speed settings, the Automate DC Roller Motors can be fixed to a slower, quieter speed to suit small spaces.



**Automate DC 1.1**  
12V, 1.1Nm, Ø25mm, 20-40RPM, 299mm long

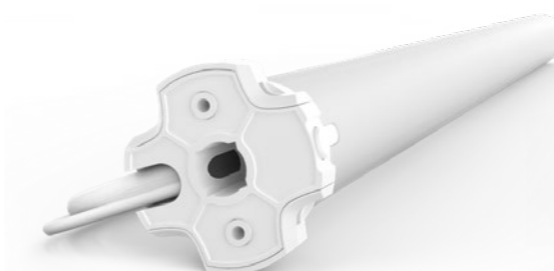


**Automate DC Q2.0**  
12V, 2.0Nm, Ø28mm, 20-28RPM, 437mm long

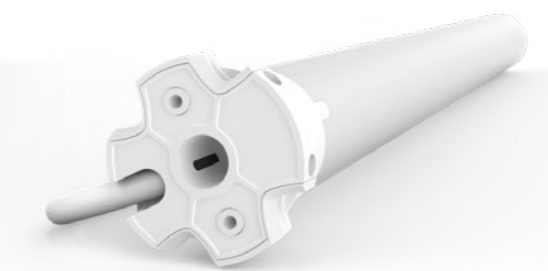


## AUTOMATE E & M ROLLER MOTORS

For roller shades to suit medium to large windows and large commercial projects, the Automate E range of AC powered motors and the Automate M range of mechanical limit motors are the ideal hard-wired choice.



**Automate E6**  
240V, 6.0Nm, Ø35mm, 28RPM, 579mm long



**Automate M6**  
240V, 6.0Nm, Ø35mm, 28RPM, 473mm long



## AUTOMATE DC POWER DISTRIBUTION PANEL

The Automate DC Power Distribution Panel provides power for up to 18 separate Automate DC motors, removing the need for individual power adapters. While also supporting cable runs of up to 540 metres, this is the complete, hardwired solution for motors that require speed control and quiet operation in narrow applications.

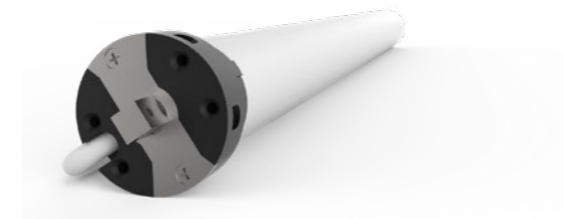


## AUTOMATE AWNING MOTORS

The Automate A range of motors have been designed to suit the Rollease Acmeda range of open and cassette, award-winning awnings.

The powerful motors can easily swap between an open and cassette mode to ensure easy installation and operation.

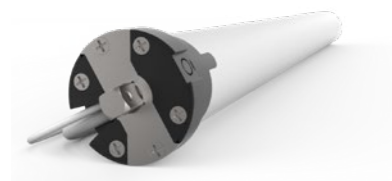
When combined with the Automate range of sensors and controllers, the Automate A motors can offer an intuitive and energy efficient solution for outdoor spaces.



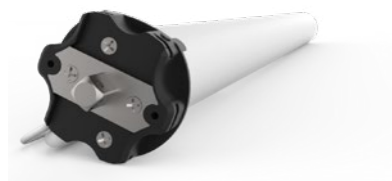
**Automate A50**  
240V, 50.0Nm, Ø45mm, 12RPM, 676mm long



**Automate A20**  
240V, 20.0Nm, Ø45mm, 15RPM, 663mm long



**Automate FT15**  
240V, 15.0Nm, Ø45mm, 15RPM, 621mm long



**Automate X50**  
240V, 50.0Nm, Ø45mm, 12PRM, 674mm long



## AUTOMATE EXTERNAL MOTORS

The Automate FT15 has been tailored for Rollease Acmeda's Zipscreen and External Wire Guide systems. When used with Rollease Acmeda's Ultra-Lock, a simple touch will activate the FT15 motor to automatically close, lock and tension the blind for increased stability and ease of use.

At the upper end of the scale, the Automate X50 provides all the benefits of having smart shades with the lifting capacity required to control the Zipscreen Extreme and Wire Guide Extreme.





## AUTOMATE ROMAN MOTOR

The Automate CL 0.8 motor can be paired with Rollease Acmeda's SS38 Motorised System, providing a flexible motorised solution for roman shades.

Offering the choice of battery power or 12V wired connection, the CL 0.8 also integrates with the Automate suite of controllers to achieve the smart shade experience.



Automate CL 0.8  
12V, 0.8Nm, Ø24mm, 34-50RPM, 193mm long



## AUTOMATE CURTAIN MOTOR

The Automate C motor for curtains features stand-out "soft touch" technology. A gentle pull on the fabric will initiate movement to automatically open or close the curtain.

This impressive motor has been designed to be quiet for acoustic comfort and offers the luxury of shade automation with the suite of Automate controls.



Automate C  
240V, 1.2Nm, 14RPM, 335mm long





## FOLLOW US



Find us on social media with: [@ROLLEASEACMEDA](#)

© 2019 Copyright Rollease Acmeda Group